



**ALDRIDGE**

"I hear you have a better product than the others! Overheard a bunch were ordered for the East Coast. Good deal!"



**STEVENSON**  
CRANE - RIGGING - HEAVY HAUL

"I was surprised how bright these are. Lightweight and strong. Nice product."



**INTREN**



PORTABLE LIGHTING  
**PLS**  
SOLUTIONS, INC.

"My guys don't want to use anything else. Easy to set up and take down."



**K-FIVE**  
CONSTRUCTION CORPORATION



**SCHROEDER**  
ASPHALT SERVICES, INC.



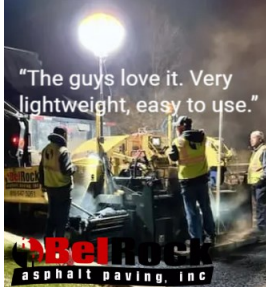

*Peter Baker & Son Co.*

"Awesome light. It makes our job so much easier."



*Peter Baker & Son Co.*

"The guys love it. Very lightweight, easy to use."



**Abel Rock**  
asphalt paving, Inc.



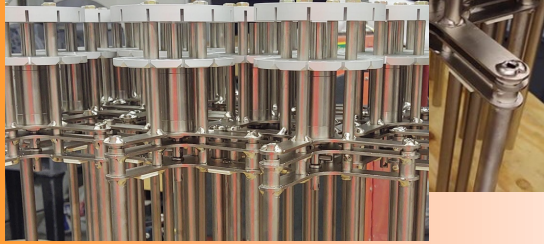
**ARA**  
American Rental Association  
Member



 [WWW.PORTABLELIGHTINGSOLUTIONS.NET](http://WWW.PORTABLELIGHTINGSOLUTIONS.NET)  
WHEN THE SUN GOES DOWN  
**THE SAFETY GOES UP**

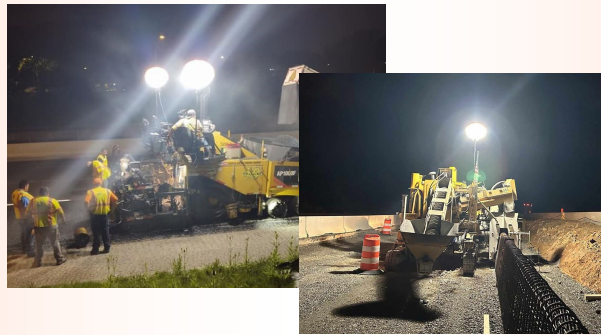






### UNIQUE SLIDE ASSEMBLY

*Our unique latch and slide assembly is what sets us apart from the rest. With it's one push to deploy and another to delatch the balloon shape, makes this the simplest balloon light to set up. A robotically welded, Nickel plate slide and latch is built for many years of service. Anodized billet aluminum top and bottom assemblies assure the utmost in strength. We are the ONLY balloon light to offer a screw-in, replaceable LED bulb that is field serviceable in a matter of minutes.*



- *Easy and fast to use*
- *Push to deploy*
- *Replaceable LED Bulb*
- *300 Watt / 42,000 Lumens*
- *Nickel Plated*
- *Patented Slide Assembly*
- *Meets all State and Federal Requirements for "Glare Free Balloon Lighting"*
- *No Blower Motor, Set Screws or Duct Tape Required*
- *Made In The U.S.A.*



### HEAVY DUTY COVER

*The glare free cover is recommended for roadside use. Maximum lighting without the glare. Our heavy duty fade resistant poly material cover was made to withstand the rigors of construction use. Our Super Bright cover is more for larger event lighting. Not so much glare free but brighter. Same strong light, different cover.*

